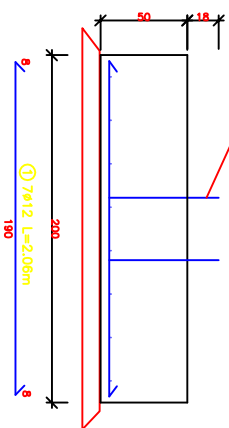
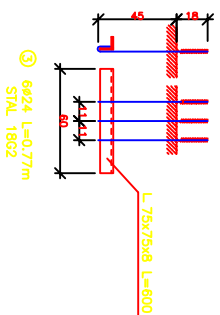
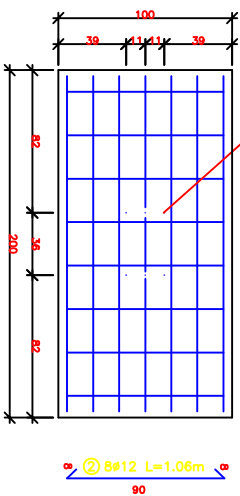


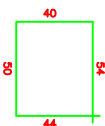
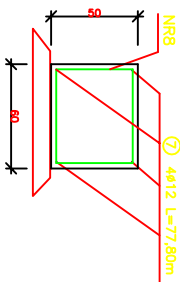
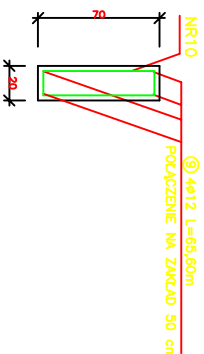
## śruby kotwice NR3



## Śruby kotwiące NR3



NR10 ⑨ 4ø12 L=65,60m



Id	Species	Time	Number	Order
[m/s]	[s]	[m]	[m]	[m]
			26	1862
			0	15
			18	18
			0.222	1797
				2.85

FUNDWING F1 REL 12				
1	12	26	10.56	
2	12	26	10.56	
3	12	26	10.56	
4	12	26	10.56	
5	12	26	10.56	
6	12	26	10.56	
7	12	26	10.56	
8	12	26	10.56	
9	12	26	10.56	
10	12	26	10.56	
11	12	26	10.56	
12	12	26	10.56	
13	12	26	10.56	
14	12	26	10.56	
15	12	26	10.56	
16	12	26	10.56	
17	12	26	10.56	
18	12	26	10.56	
19	12	26	10.56	
20	12	26	10.56	
21	12	26	10.56	
22	12	26	10.56	
23	12	26	10.56	
24	12	26	10.56	
25	12	26	10.56	
26	12	26	10.56	
27	12	26	10.56	
28	12	26	10.56	
29	12	26	10.56	
30	12	26	10.56	
31	12	26	10.56	
32	12	26	10.56	
33	12	26	10.56	
34	12	26	10.56	
35	12	26	10.56	
36	12	26	10.56	
37	12	26	10.56	
38	12	26	10.56	
39	12	26	10.56	
40	12	26	10.56	
41	12	26	10.56	
42	12	26	10.56	
43	12	26	10.56	
44	12	26	10.56	
45	12	26	10.56	
46	12	26	10.56	
47	12	26	10.56	
48	12	26	10.56	
49	12	26	10.56	
50	12	26	10.56	
51	12	26	10.56	
52	12	26	10.56	
53	12	26	10.56	
54	12	26	10.56	
55	12	26	10.56	
56	12	26	10.56	
57	12	26	10.56	
58	12	26	10.56	
59	12	26	10.56	
60	12	26	10.56	
61	12	26	10.56	
62	12	26	10.56	
63	12	26	10	

FUNDWING F2 REL 12				
1	12	26	10.56	
2	12	26	10.56	
3	12	26	10.56	
4	12	26	10.56	
5	12	26	10.56	
6	12	26	10.56	
7	12	26	10.56	
8	12	26	10.56	
9	12	26	10.56	
10	12	26	10.56	
11	12	26	10.56	
12	12	26	10.56	
13	12	26	10.56	
14	12	26	10.56	
15	12	26	10.56	
16	12	26	10.56	
17	12	26	10.56	
18	12	26	10.56	
19	12	26	10.56	
20	12	26	10.56	
21	12	26	10.56	
22	12	26	10.56	
23	12	26	10.56	
24	12	26	10.56	
25	12	26	10.56	
26	12	26	10.56	
27	12	26	10.56	
28	12	26	10.56	
29	12	26	10.56	
30	12	26	10.56	
31	12	26	10.56	
32	12	26	10.56	
33	12	26	10.56	
34	12	26	10.56	
35	12	26	10.56	
36	12	26	10.56	
37	12	26	10.56	
38	12	26	10.56	
39	12	26	10.56	
40	12	26	10.56	
41	12	26	10.56	
42	12	26	10.56	
43	12	26	10.56	
44	12	26	10.56	
45	12	26	10.56	
46	12	26	10.56	
47	12	26	10.56	
48	12	26	10.56	
49	12	26	10.56	
50	12	26	10.56	
51	12	26	10.56	
52	12	26	10.56	
53	12	26	10.56	
54	12	26	10.56	
55	12	26	10.56	
56	12	26	10.56	
57	12	26	10.56	
58	12	26	10.56	
59	12	26	10.56	
60	12	26	10.56	
61	12	26	10.56	
62	12	26	10.56	
63	12	26	10	

FUNDWING F2 REL 12				
1	12	26	10.56	
2	12	26	10.56	
3	12	26	10.56	
4	12	26	10.56	
5	12	26	10.56	
6	12	26	10.56	
7	12	26	10.56	
8	12	26	10.56	
9	12	26	10.56	
10	12	26	10.56	
11	12	26	10.56	
12	12	26	10.56	
13	12	26	10.56	
14	12	26	10.56	
15	12	26	10.56	
16	12	26	10.56	
17	12	26	10.56	
18	12	26	10.56	
19	12	26	10.56	
20	12	26	10.56	
21	12	26	10.56	
22	12	26	10.56	
23	12	26	10.56	
24	12	26	10.56	
25	12	26	10.56	
26	12	26	10.56	
27	12	26	10.56	
28	12	26	10.56	
29	12	26	10.56	
30	12	26	10.56	
31	12	26	10.56	
32	12	26	10.56	
33	12	26	10.56	
34	12	26	10.56	
35	12	26	10.56	
36	12	26	10.56	
37	12	26	10.56	
38	12	26	10.56	
39	12	26	10.56	
40	12	26	10.56	
41	12	26	10.56	
42	12	26	10.56	
43	12	26	10.56	
44	12	26	10.56	
45	12	26	10.56	
46	12	26	10.56	
47	12	26	10.56	
48	12	26	10.56	
49	12	26	10.56	
50	12	26	10.56	
51	12	26	10.56	
52	12	26	10.56	
53	12	26	10.56	
54	12	26	10.56	
55	12	26	10.56	
56	12	26	10.56	
57	12	26	10.56	
58	12	26	10.56	
59	12	26	10.56	
60	12	26	10.56	
61	12	26	10.56	
62	12	26	10.56	
63	12	26	10	

FUNDWING F2 REL 12				
1	12	26	10.56	
2	12	26	10.56	
3	12	26	10.56	
4	12	26	10.56	
5	12	26	10.56	
6	12	26	10.56	
7	12	26	10.56	
8	12	26	10.56	
9	12	26	10.56	
10	12	26	10.56	
11	12	26	10.56	
12	12	26	10.56	
13	12	26	10.56	
14	12	26	10.56	
15	12	26	10.56	
16	12	26	10.56	
17	12	26	10.56	
18	12	26	10.56	
19	12	26	10.56	
20	12	26	10.56	
21	12	26	10.56	
22	12	26	10.56	
23	12	26	10.56	
24	12	26	10.56	
25	12	26	10.56	
26	12	26	10.56	
27	12	26	10.56	
28	12	26	10.56	
29	12	26	10.56	
30	12	26	10.56	
31	12	26	10.56	
32	12	26	10.56	
33	12	26	10.56	
34	12	26	10.56	
35	12	26	10.56	
36	12	26	10.56	
37	12	26	10.56	
38	12	26	10.56	
39	12	26	10.56	
40	12	26	10.56	
41	12	26	10.56	
42	12	26	10.56	
43	12	26	10.56	
44	12	26	10.56	
45	12	26	10.56	
46	12	26	10.56	
47	12	26	10.56	
48	12	26	10.56	
49	12	26	10.56	
50	12	26	10.56	
51	12	26	10.56	
52	12	26	10.56	
53	12	26	10.56	
54	12	26	10.56	
55	12	26	10.56	
56	12	26	10.56	
57	12	26	10.56	
58	12	26	10.56	
59	12	26	10.56	
60	12	26	10.56	
61	12	26	10.56	
62	12	26	10.56	
63	12	26	10	

FUNDWING F2 REL 12				
1	12	26	10.56	
2	12	26	10.56	
3	12	26	10.56	
4	12	26	10.56	
5	12	26	10.56	
6	12	26	10.56	
7	12	26	10.56	
8	12	26	10.56	
9	12	26	10.56	
10	12	26	10.56	
11	12	26	10.56	
12	12	26	10.56	
13	12	26	10.56	
14	12	26	10.56	
15	12	26	10.56	
16	12	26	10.56	
17	12	26	10.56	
18	12	26	10.56	
19	12	26	10.56	
20	12	26	10.56	
21	12	26	10.56	
22	12	26	10.56	
23	12	26	10.56	
24	12	26	10.56	
25	12	26	10.56	
26	12	26	10.56	
27	12	26	10.56	
28	12	26	10.56	
29	12	26	10.56	
30	12	26	10.56	
31	12	26	10.56	
32	12	26	10.56	
33	12	26	10.56	
34	12	26	10.56	
35	12	26	10.56	
36	12	26	10.56	
37	12	26	10.56	
38	12	26	10.56	
39	12	26	10.56	
40	12	26	10.56	
41	12	26	10.56	
42	12	26	10.56	
43	12	26	10.56	
44	12	26	10.56	
45	12	26	10.56	
46	12	26	10.56	
47	12	26	10.56	
48	12	26	10.56	
49	12	26	10.56	
50	12	26	10.56	
51	12	26	10.56	
52	12	26	10.56	
53	12	26	10.56	
54	12	26	10.56	
55	12	26	10.56	
56	12	26	10.56	
57	12	26	10.56	
58	12	26	10.56	

[illegible]